



Reducing your Environmental Impact

Environmental Management
System ISO 14001



Delivering positive change with tangible impact

"71% of respondents to a BSI survey agree climate change is the most critical issue facing the world at the present time¹."

We are in an age of heightened environmental consciousness. Climate change, biodiversity loss, and resource depletion have become key priorities for individuals, organizations, and governments alike.

While significant progress is being made, more can be done to address climate change and strengthen environmental stewardship.

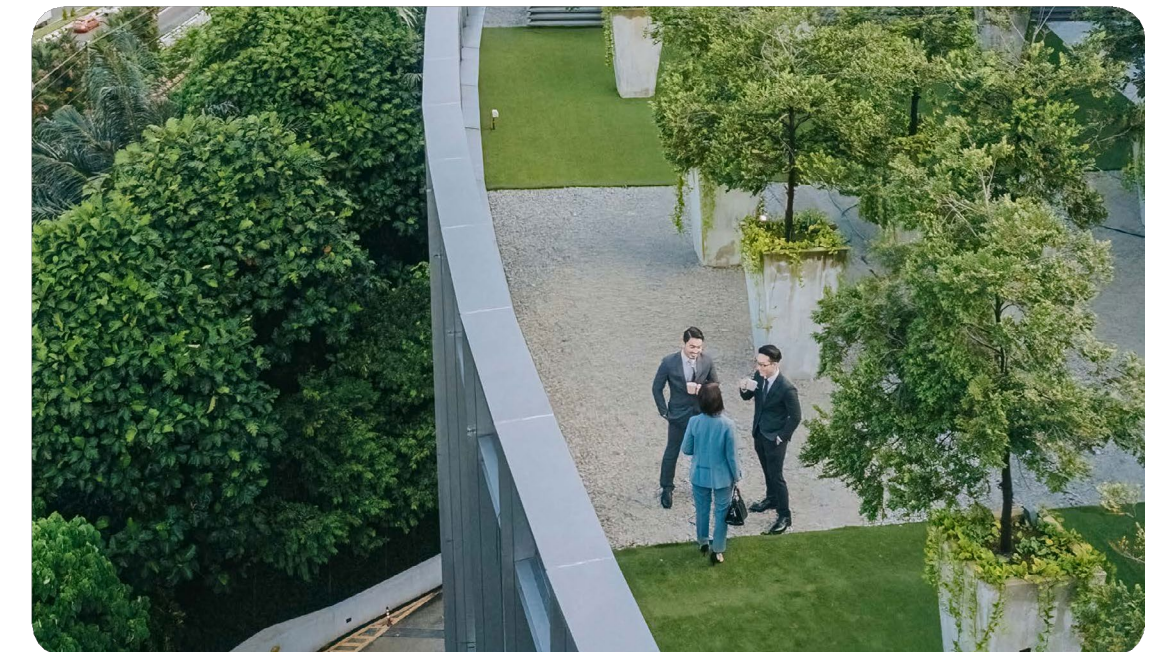
Organizations across the globe have a pivotal role to play in accelerating progress towards a sustainable world.

One of the most effective ways your organization can become an agent of change is by adopting a proactive approach to environmental management. By measuring the environmental results of your actions, you can implement measures to minimize your environmental footprint.

To deliver this reduction in environmental footprint, many organizations are leveraging Environmental Management Systems (EMS) to align their operations with sustainable practices. By harnessing and certifying the internationally recognized standard ISO 14001 Environmental management systems — Requirements with guidance for use,

you can help your organization make continual improvements in environmental performance and ensure regulatory compliance requirements are consistently being met.

This proactive approach to environmental management can result in tangible benefits and signal your organization's ongoing commitment to sustainability.



In this guide, we'll show you how certification to ISO 14001 can help you:

- Strengthen environmental compliance.
- Reduce environmental impact.
- Mitigate operational and reputational risk.
- Enhance environmental performance.
- Drive operational excellence.
- Reduce expenditures.
- Build trust.



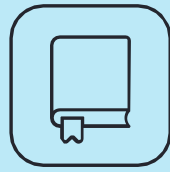
What's driving the need for an EMS?

Environmental management is a dynamic field that continues to evolve. That's why we're highlighting the key drivers of change that are compelling organizations to adopt a robust, certified EMS to align their operations with sustainable practices.

" 79% of those surveyed by BSI globally agree we need an international approach to address climate change²."



²BSI sustainability research carried out in July 2024. Burson surveyed 9,396 adults in the UK, US, France, Germany, the Netherlands, China, Japan, India and Australia.



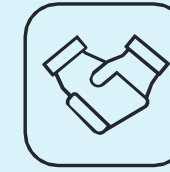
Regulatory changes

Governments worldwide have enacted stringent environmental laws and regulations to protect natural resources and public health. Policies related to carbon pricing, plastic waste reduction, and biodiversity conservation are all influencing organizational practices alongside global initiatives like The Paris Agreement and United Nations' Sustainable Development Goals (SDGs). There is also rising pressure to meet international sustainability reporting requirements³ from legislation such as the EU's Corporate Sustainability Due Diligence Directive (CSDDD).



Societal pressures

Customers and stakeholders are increasingly favouring companies that demonstrate a public commitment to sustainability. In fact, BSI's research finds that 62% of customers agree that they seek out environmental sustainability claims when purchasing goods. When it comes to attracting and retaining talent, particularly Gen Z employees, a business' ESG and CSR initiatives are playing an incredibly important role in influencing decision making when it comes to accepting jobs⁴.



Environmental, Social and Governance

Helping organizations fulfill their ESG commitments, environmental management systems play a crucial role in driving sustainable practices. They enable professionals to identify and mitigate ESG risks, reduce resource consumption and foster an eco-responsibility culture. Publishing ESG reports and embedding ESG principles into the fabric of business operations has also become best practice to strengthen accountability and reassure stakeholders.

An effective EMS also provides the performance data required for broader sustainability and ESG disclosures to support informed decision making.

³ESG in APAC: 3 trends to watch in 2024, White & Case, www.whitecase.com/insight-alert/esg-apac-3-trends-watch-2024.

⁴More Than 40% of Gen Z & Millennials Would Change Jobs Over Climate Concerns, Deloitte Survey Finds, ESG Today, www.esgtoday.com/more-than-40-of-gen-z-millennials-wouldchange-jobs-over-climate-concerns-deloitte-survey-finds/.



Carbon net zero

Environmental management systems play a critical role in helping organizations achieve ambitious net zero goals that are being set. Taking proactive responsibility in the global drive towards net zero is critical for businesses today. It's also essential for maintaining a strong reputation with employees, customers, and stakeholders. An EMS provides a structure upon which to define your net zero roadmap and benchmarking progress toward achieving it.



Sustainable supply chains

In order to protect people and the environment, organizations are under increasing pressure to ensure their value chain implements socially responsible and environmental practices commensurate with their own ethical practices. International standards, frameworks, and processes like lifecycle assessments are increasingly being integrated into supply chains to reduce waste, streamline operations, and strengthen relationships. This approach is also helping to make initiatives that embrace the circular economy and transparent and ethical sourcing a reality.



“With more than 500,000 certifications to ISO 14001 in over 180 countries around the world, ISO 14001 is the most widely recognized standard for EMS worldwide. It’s the international standard for companies and organizations of any type that require practical tools to manage their environmental responsibilities⁵.”

Understanding how ISO 14001 works

Reducing the environmental impact of your organization’s operations not only contributes to a healthier planet but also inspires stakeholder and consumer trust.

An EMS aligned to the requirements of ISO 14001 helps you set and achieve specific environmental objectives, as well as demonstrate your commitment to sustainability. It provides a robust framework that helps you set objectives and targets, and measure and continually improve your environmental performance. This ensures your approach meets the needs of your business and its stakeholders.



⁵ISO 14000 family - Environmental management, ISO, www.iso.org/standards/popular/iso-14000-family.

Components of an ISO 14001 EMS

Scoping

Initial scoping of the EMS will include gaining a comprehensive understanding of the present context by engaging with all relevant parties and stakeholders.

Planning

Establishes the framework for identifying environmental aspects, complying with legal requirements, and setting objectives and targets.

Environmental policy

A formal declaration of the organization's commitment to the environment, including compliance with laws, pollution, prevention and continual improvement.

Implementation and operation

Defines roles and responsibilities, ensures competence and awareness, and establishes operational controls and emergency procedures.



See more on next page



Components of an ISO 14001 EMS

Checking and corrective action

Involves monitoring and measuring environmental performance, evaluating compliance, managing non-conformities, and conducting internal audits.

Continual improvement

Focuses on ongoing improvements to the EMS and overall environmental performance.

Management review

Top management regularly reviews the EMS to ensure its continuing suitability, adequacy, and effectiveness.



Organizational benefits of ISO 14001

- Reduce environmental impact.
- Improve brand reputation.
- Lower GHG emissions.
- Manage resource use and reduce waste.
- Reduce operational costs.
- Strengthen compliance.
- Build resilience.

How ISO 14001 enhances environmental management and operational efficiency

Identification and assessment of GHG emissions sources

ISO 14001 helps organizations identify direct emissions from operations, such as fuel combustion and industrial processes, as well as indirect emissions from energy consumption and supply chains. This enables organizations to prioritize GHG emission reduction efforts and allocate resources effectively.

Setting GHG emissions reduction targets

An EMS facilitates the setting of specific, measurable, achievable, relevant, and time-bound (SMART) emissions reduction targets. Such ambitious but real targets help organizations track progress over time and encourage continual improvement.



How ISO 14001 enhances environmental management and operational efficiency

Compliance with regulations and standards

ISO 14001 requires a thorough understanding of how relevant legal and other requirements relate to your organization, ensuring that you are compliant with current laws and expectations and prepared for future regulatory changes.

Examples of how GHG emissions reduction initiatives can be implemented through an EMS:

- Making energy efficiency improvements in buildings, equipment, and processes to reduce energy consumption and associated emissions.
- Transitioning to renewable energy sources, such as solar, wind, and biomass, to reduce reliance on fossil fuels.
- Streamlining production processes to minimize waste and emissions.
- Promoting the use of low-emission vehicles, optimizing logistics, and encouraging telecommuting to reduce transportation-related emissions.

Monitoring and measurement

A certified EMS to ISO 14001 includes processes for monitoring and measuring environmental impact. By leveraging data collection tools and technologies, organizations can track various environmental factors, from emissions levels to resource use, and assess the effectiveness of both risk mitigation efforts, as well as opportunities—such as energy transition, lifecycle optimization, and biodiversity conservation.

” **74%** of people surveyed by BSI said they are more likely to **trust** a business’s environmental claims if they can **provide evidence** of verification or certification to validate their claims⁶.”

7 opportunities ISO 14001 certification creates

01

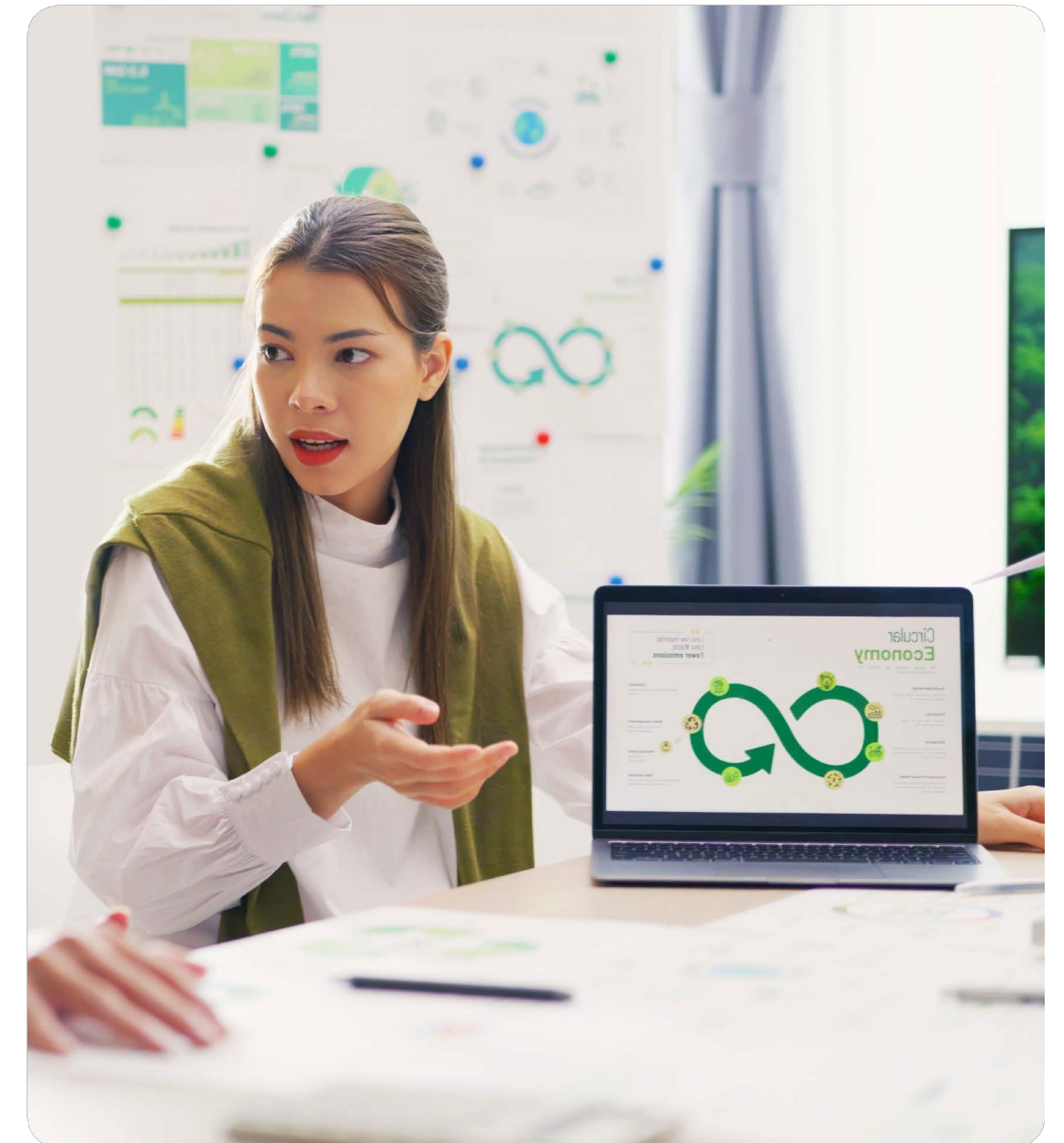
Environmental impact reduction

Reduce GHG emissions, streamline waste management, prevent pollution, and improve environmental performance.

02

Regulatory compliance

Ensure adherence to environmental laws and regulations, and reduce the risk of fines and non-compliance.



03

Cost savings

Streamline operations and reduce costs associated with waste management and resource consumption from operational areas such as procurement, storage, distribution, product development, and manufacturing.

04

Competitive advantage

Demonstrate your commitment to environmental stewardship to enhance your organization's reputation, differentiating it from competitors and strengthening your global market access.

05

Risk management

Identify potential environmental risks (such as extreme weather events and resource scarcity) and implement measures to mitigate them to reduce the likelihood of environmental incidents and associated costs.

06

Employee engagement

Boost morale and attract talent by fostering a culture of environmental responsibility.

07

Greater recognition

Enhance brand reputation and stakeholder confidence by independently demonstrating your commitment to sustainability. ISO 14001 certification aligns organizations with global sustainability goals, such as the United Nations Sustainable Development Goals (SDGs).



Our ISO 14001 Solutions



Gap assessment and pre-assessment

Our optional pre-certification assessments can help you identify areas where your EMS does not meet ISO 14001 requirements. You can then understand what changes and improvements are needed to achieve certification as well as develop a roadmap and action plan for your organization.

[Check your ISO 14001 readiness](#)



Training and qualifications

Our range of ISO 14001 courses and professional qualifications can support you wherever you are on your learning journey. Gain knowledge of the standard and learn the systems, tools, and techniques to understand, implement, and audit against ISO 14001.

[Find your ISO 14001 course](#)



Assessment and certification

Become future-ready and increase stakeholder confidence by getting and staying certified to ISO 14001.

Upon successful completion of the certification audit, BSI awards you with an accredited and internationally recognized certificate, recognizing your organization's commitment to environmental management and performance. We also provide ongoing certification support, helping you drive continuous improvement to maintain certification and adapt to evolving threats.

[Discover ISO 14001 certification](#)

Your partner in progress

We put operational and environmental sustainability at the heart of our organization and have the knowledge and expertise to help you do the same.

We work with nearly 80,000 clients in 195 countries to gain a competitive edge and can help you be future-ready.

As your trusted partner, we can help improve your environmental performance and make a meaningful commitment to a sustainable future through ISO 14001, training and certification.





Let's build a sustainable world together

Whether it's managing use of natural resources, lowering GHG emissions, or addressing other environmental challenges, we can assist your journey towards a more sustainable future. Speak to our experts today to see how we can help you improve your environmental performance with ISO 14001.

[Get in touch](#)

